

**Optum** Serve®

# Analytic tools for health equity assessment

Suman Challagulla, Managing Consultant  
Steve Johnson, Vice President

February 28, 2023



# Health Equity Analytic Reporting Tools (HEART)

## From discoveries to actions

### Explore > identify opportunities

Identify the vulnerable and socially disadvantaged populations and under-served communities that are mostly impacted by health disparities

## PIVOT

Priority Identification Vaccine Operating Tool<sup>1</sup>

## HEARS

Health Equity Assessment Review Solutions<sup>1</sup>

Examples: U.S. Census/ACS; CDC Places Project, BRFSS, SVI; data.gov and healthdata.gov

## HEALS

Health Equity Alignment Solutions<sup>2</sup>

### Take actions

## EQUALS

Equitable Quality Leveling Solutions<sup>2</sup>

- Claims-based with member reporting to support outreach and intervention activities to address health disparities
- Data enrichment applied to identify member care gap opportunities by performance and outcome measures
- Tracking to understand the level of health improvement over time by geography
- Possible dataset includes Medicaid eligibility and health care claims experience together with social determinants of health (SDOH) data

1. Using publicly available data  
2. Using health care claims

# PIVOT

## Priority Identification Vaccine Operating Tool

# Individuals with COVID-19 clinical risk factors

## Find individuals with COVID-19 clinical risk factors



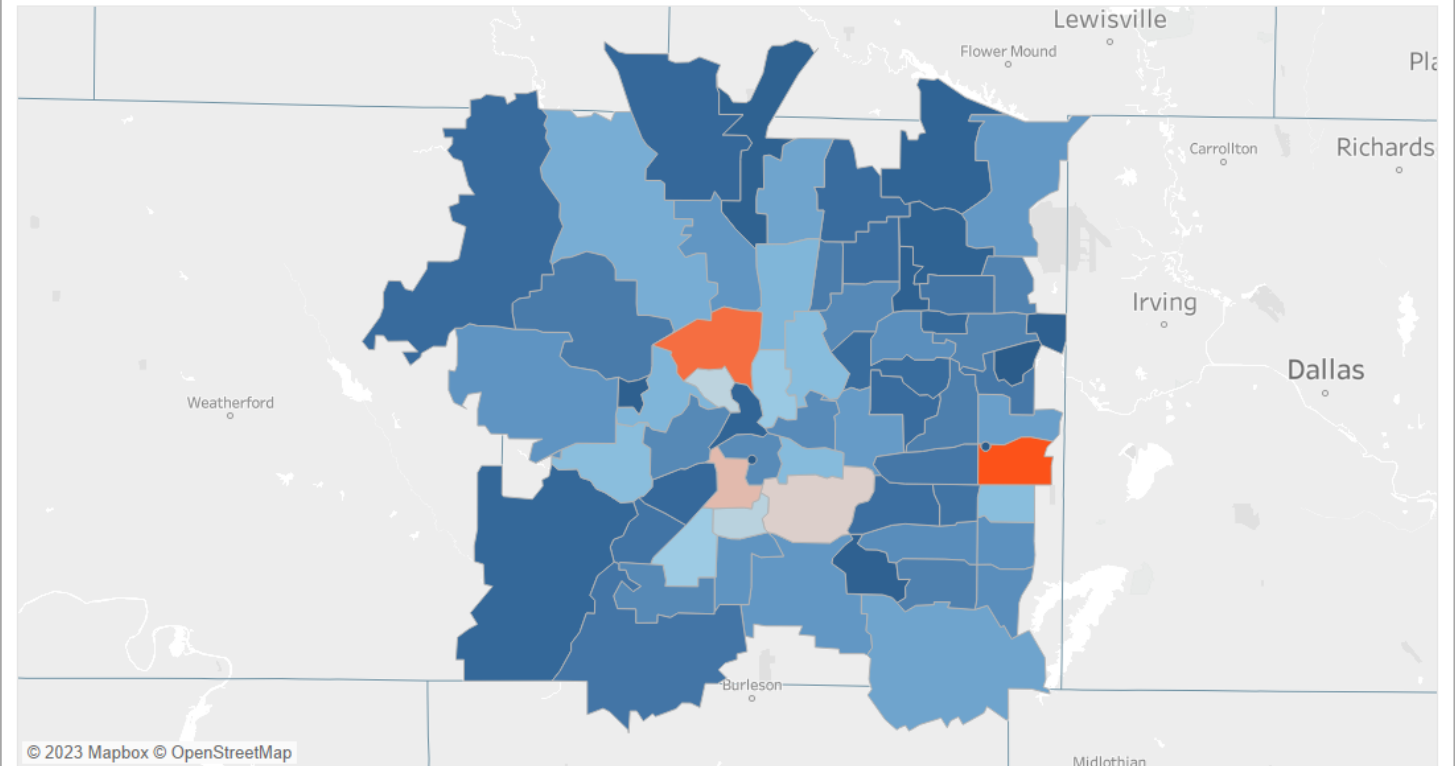
Select a population demographic measure to begin. Then further narrow search by county and zip code. Click on a zip code to see providers in the selected area.

Select Population Demographic Measure  
Hispanic or Latino Population

County  
TARRANT

Zip Code  
All

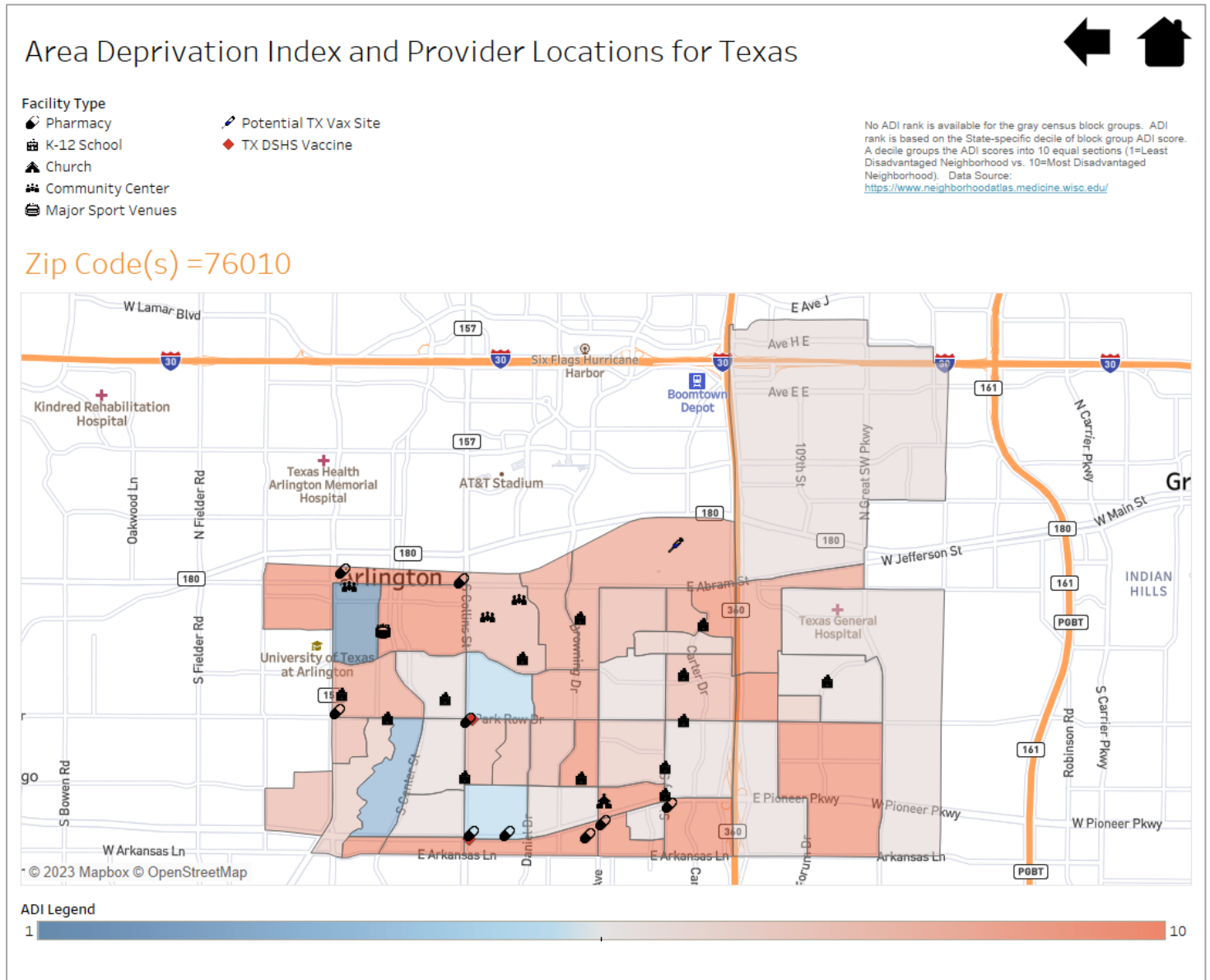
### Hispanic or Latino Population by Zip Code in TX



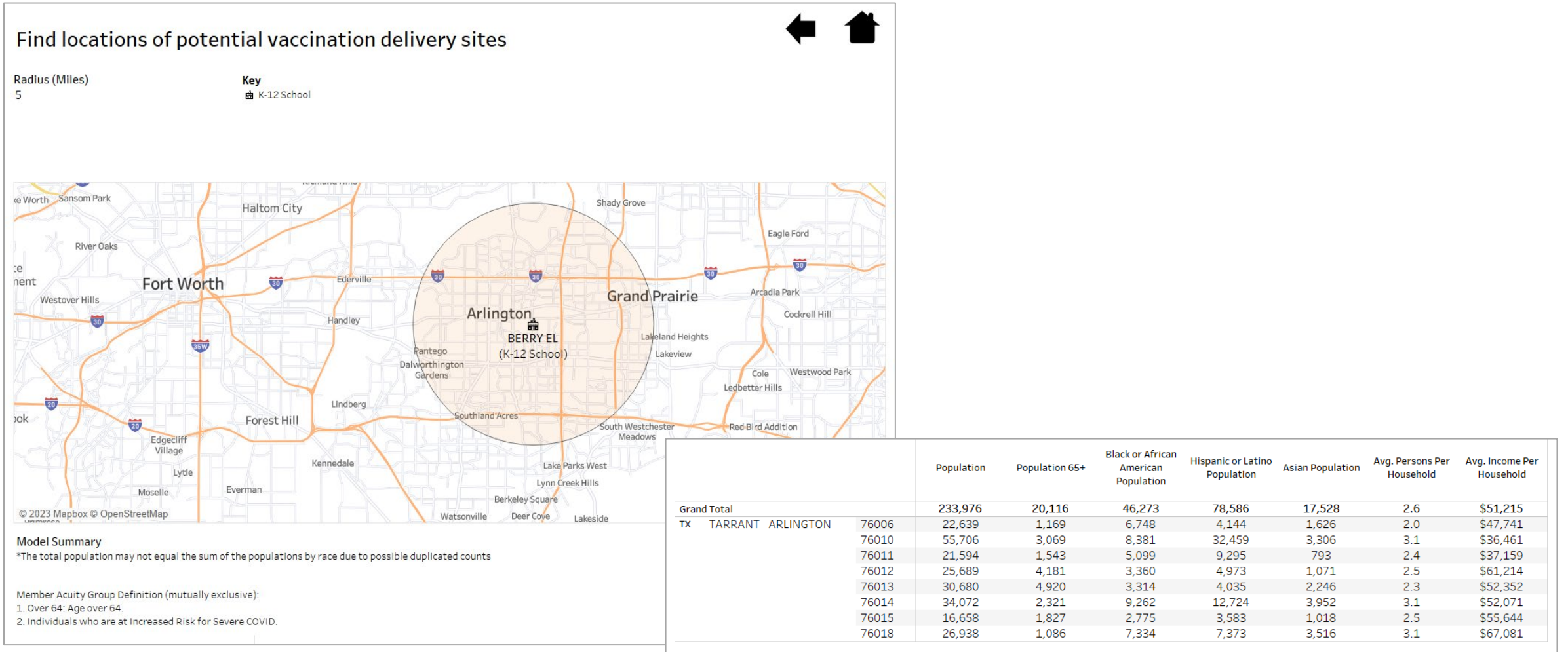
Population Measures



# Area deprivation index (ADI) and provider locations



# Locations of potential vaccination delivery site

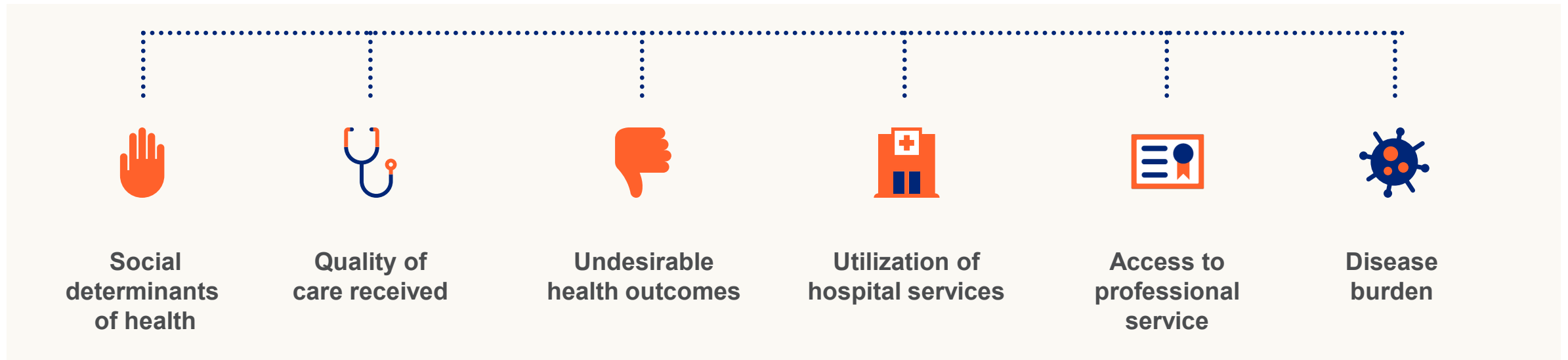


# HEARS

**Health Equity Assessment Review Solution**

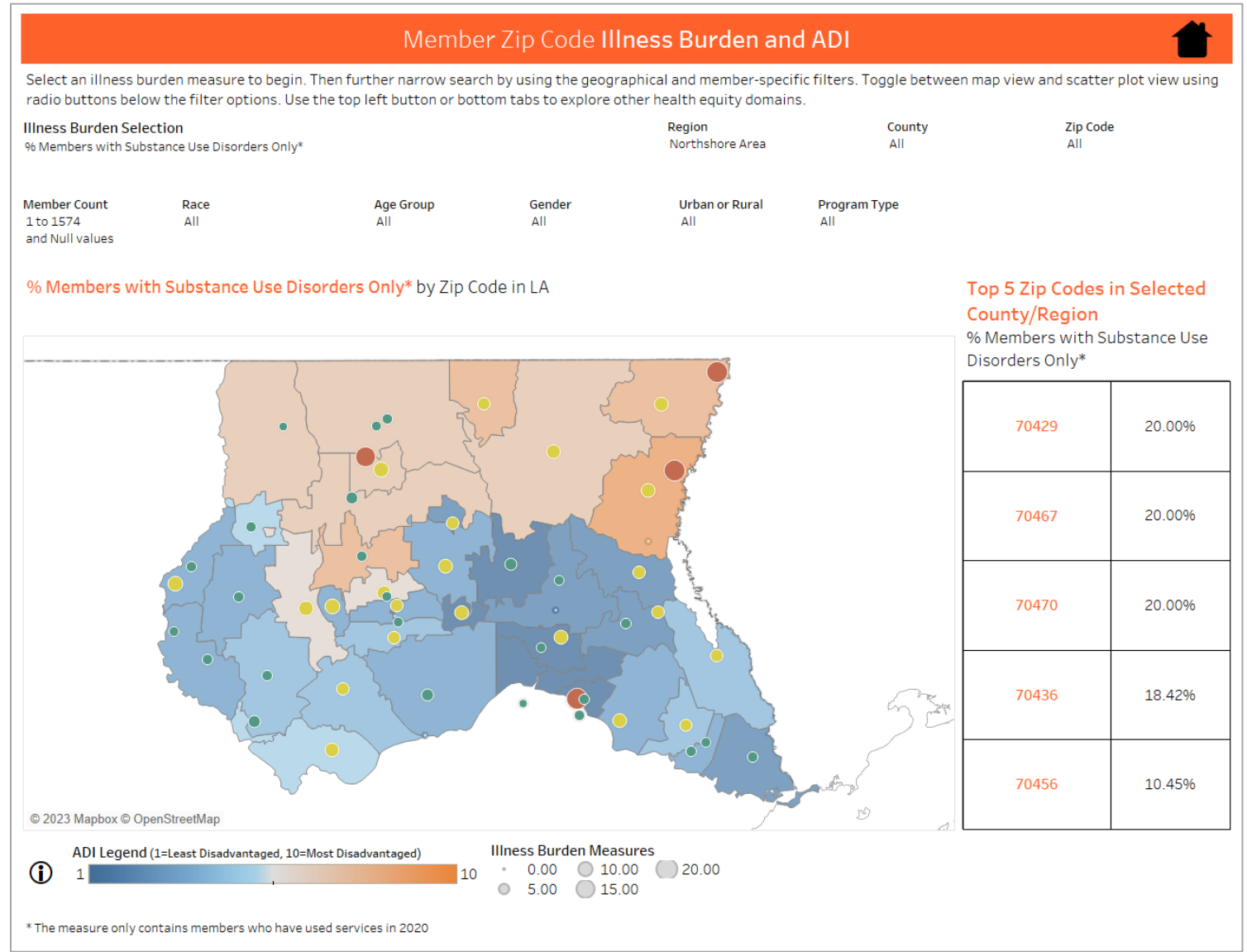
# An analytic approach to solving health inequity

HEARS examines health equity at a ZIP code level using 6 domains:

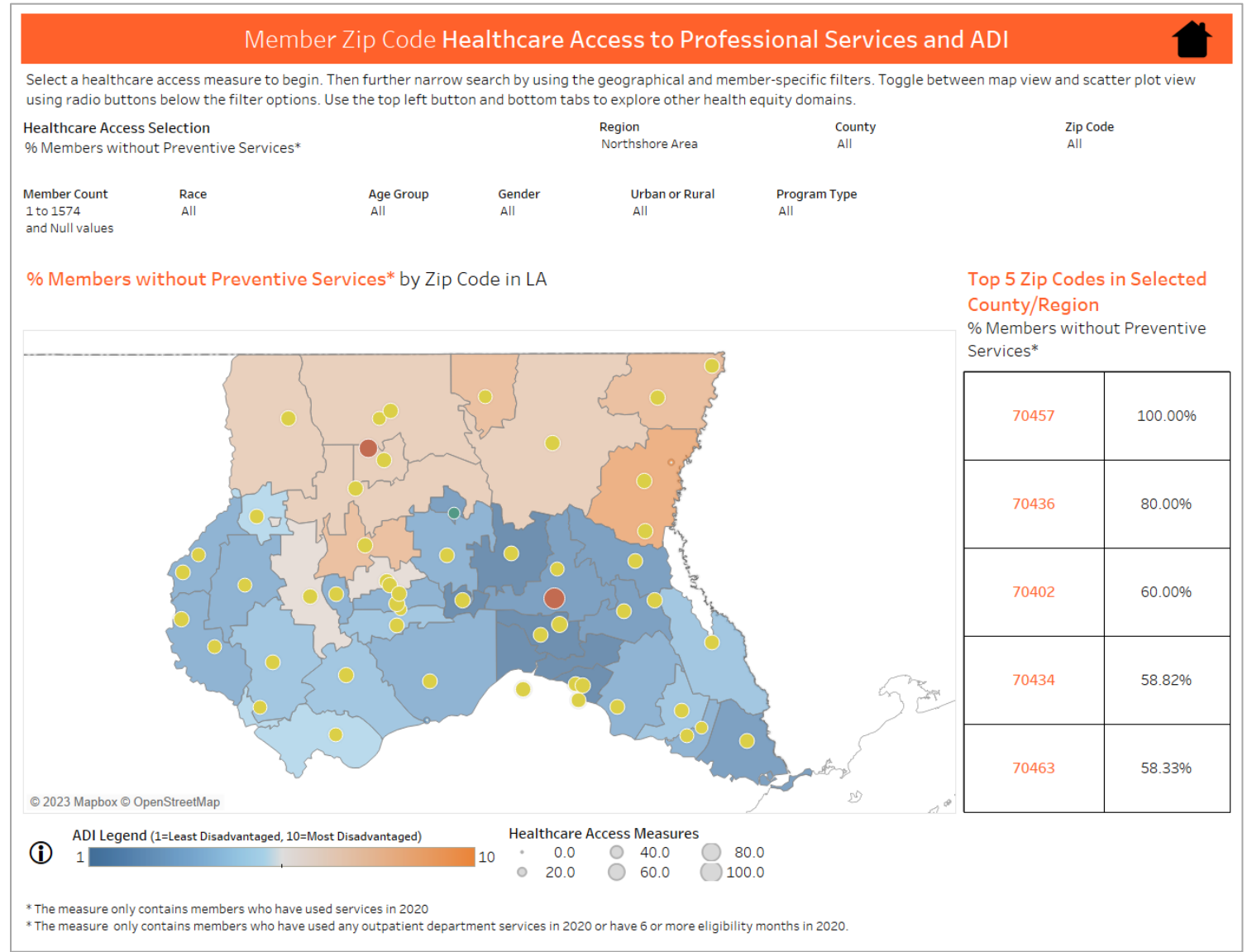




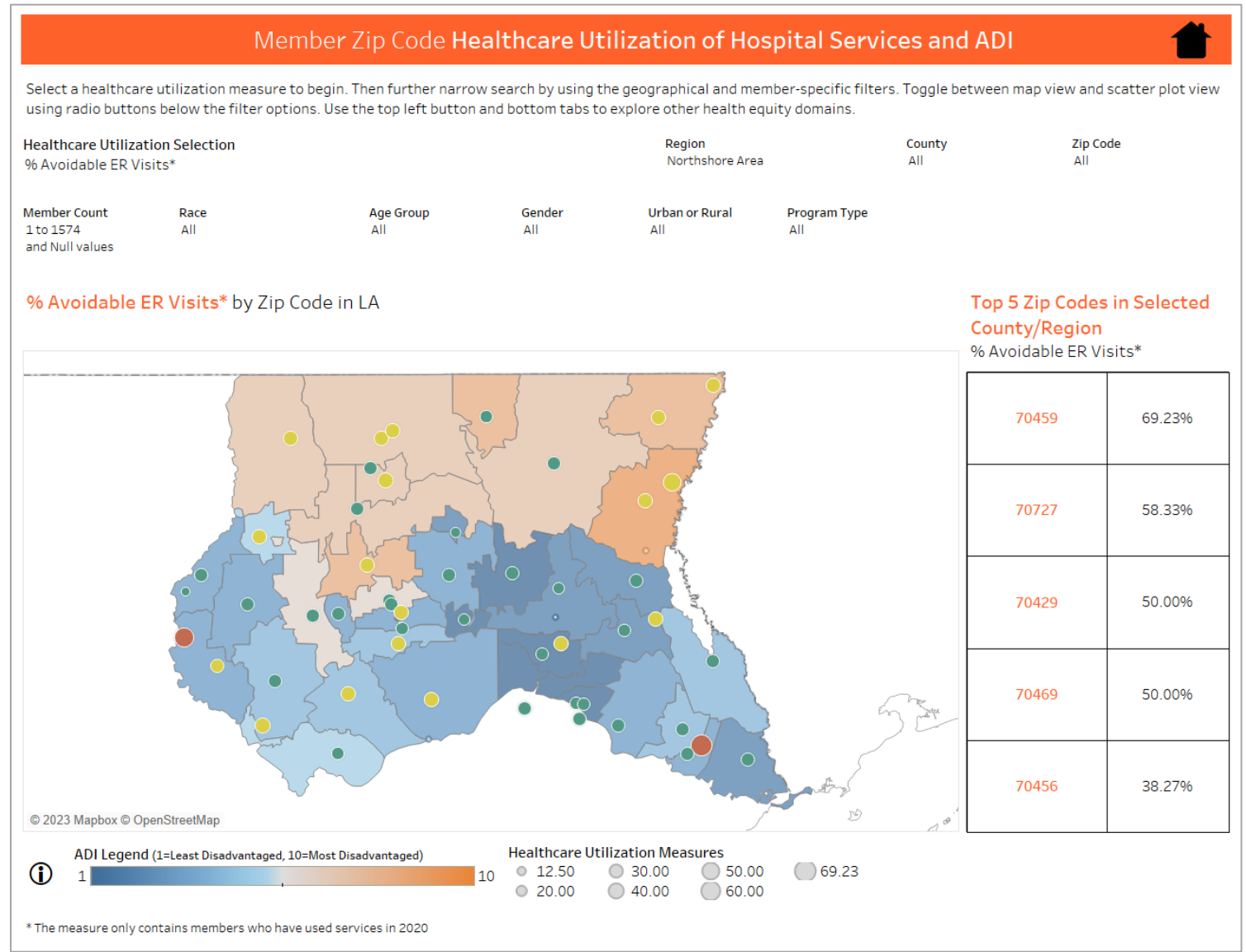
# Disease burden



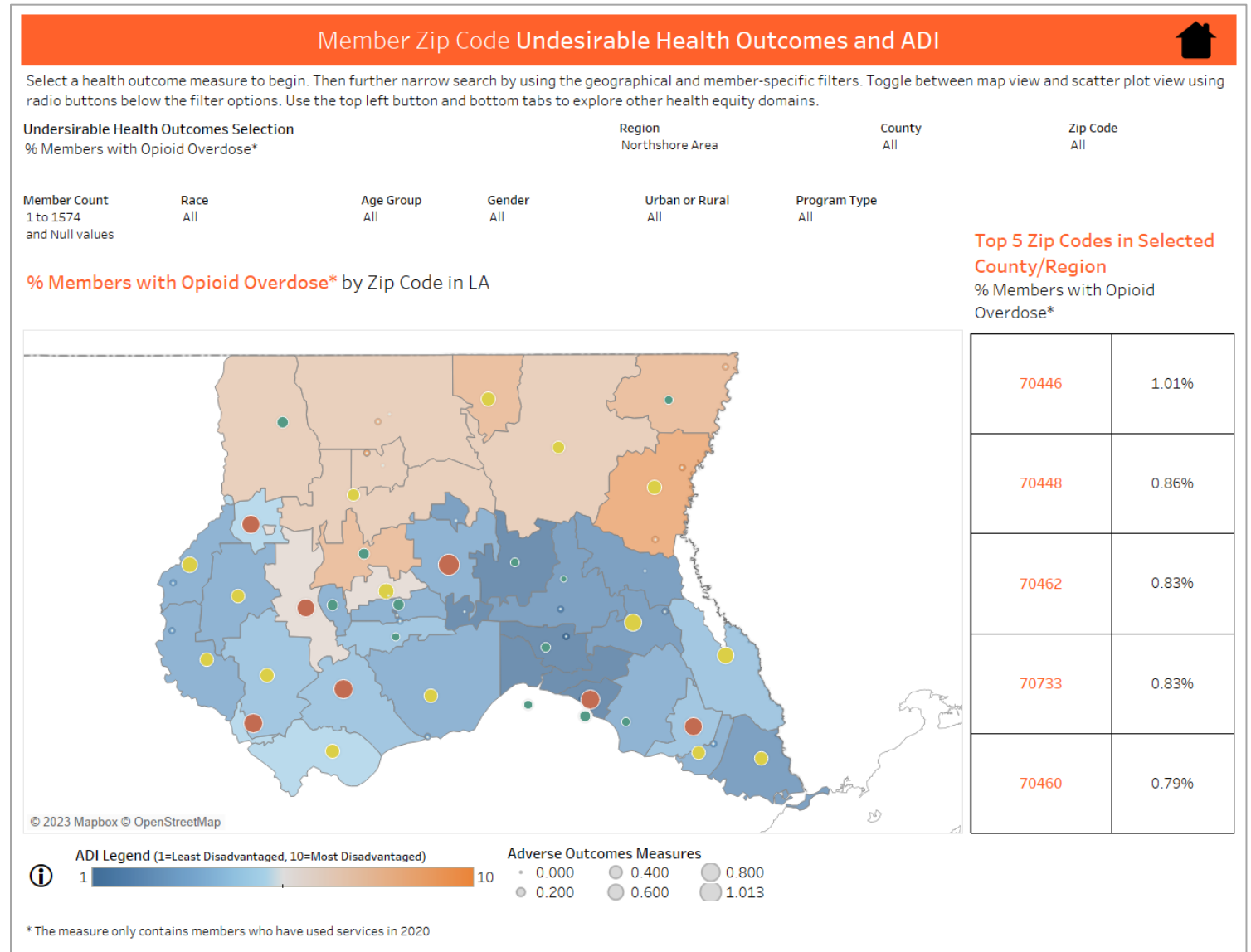
# Access to professional services



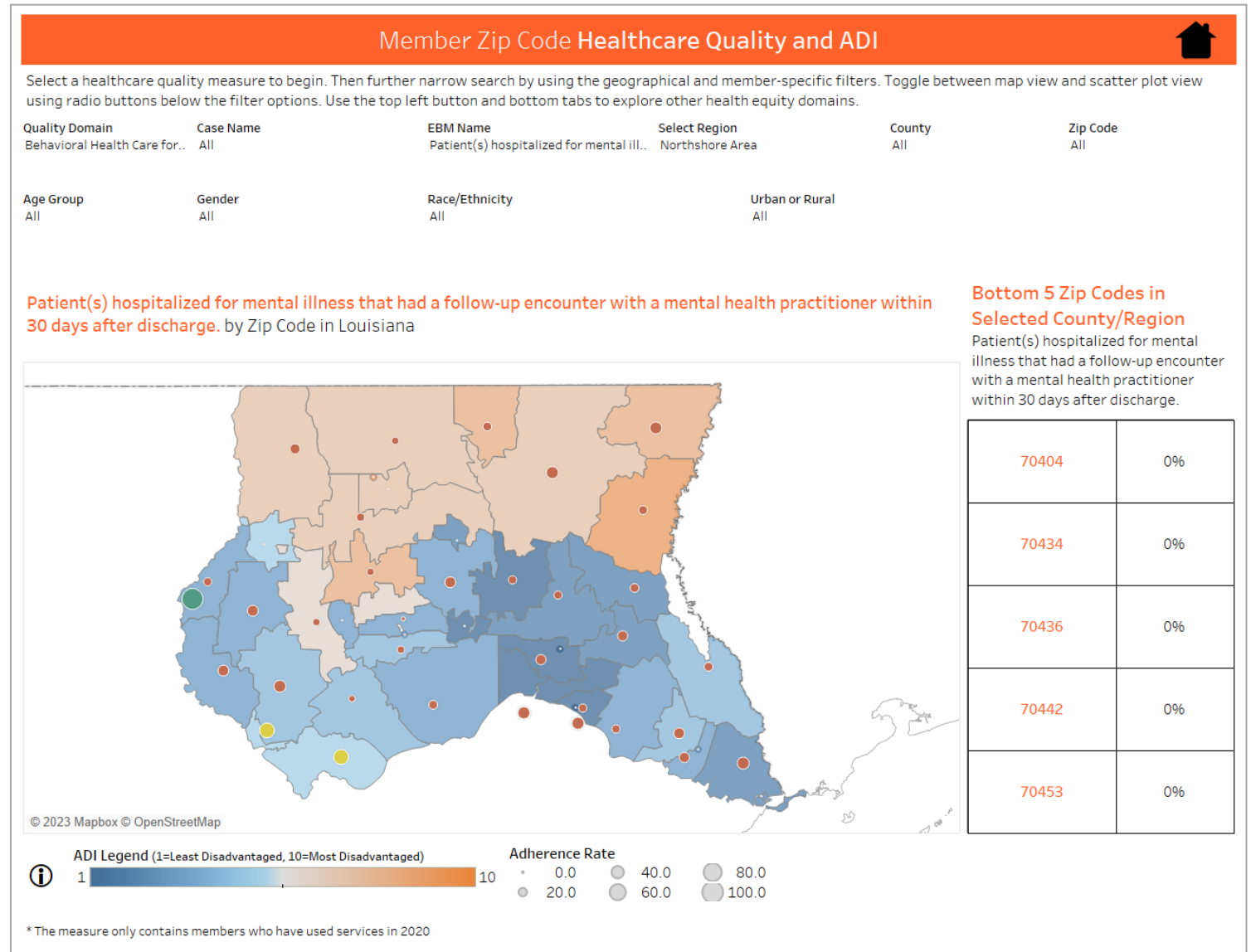
# Utilization of hospital services



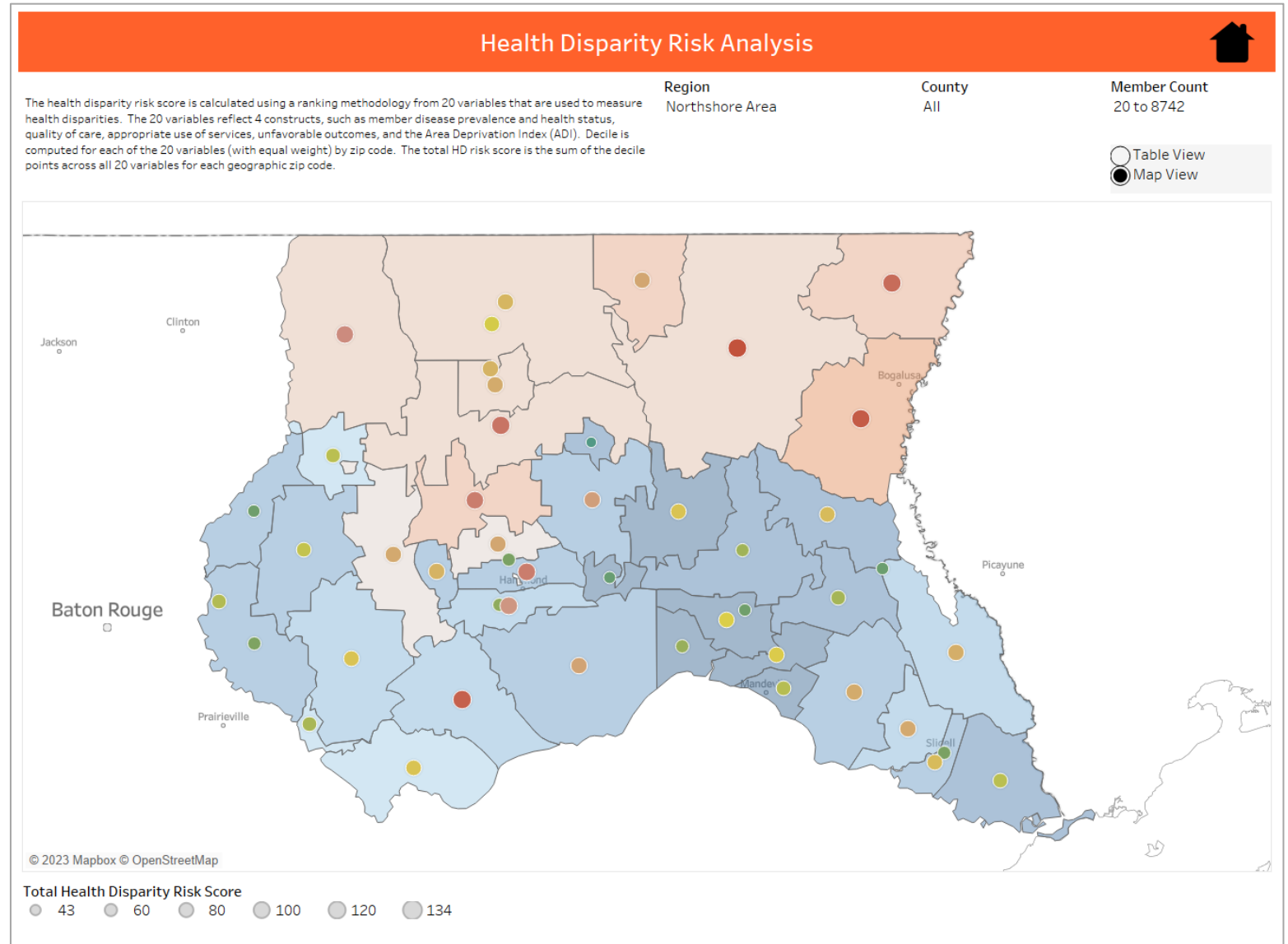
# Undesirable health outcomes



# Quality of care received



# Social determinants of health



# Q&A

---

Scan for more information on PIVOT and HEALS



**PIVOT**



**HEALS**

# Optum

Optum is a registered trademark of Optum, Inc. in the U.S. and other jurisdictions. All other brand or product names are the property of their respective owners. Because we are continuously improving our products and services, Optum reserves the right to change specifications without prior notice. Optum is an equal opportunity employer.

© 2023 Optum, Inc. All rights reserved.